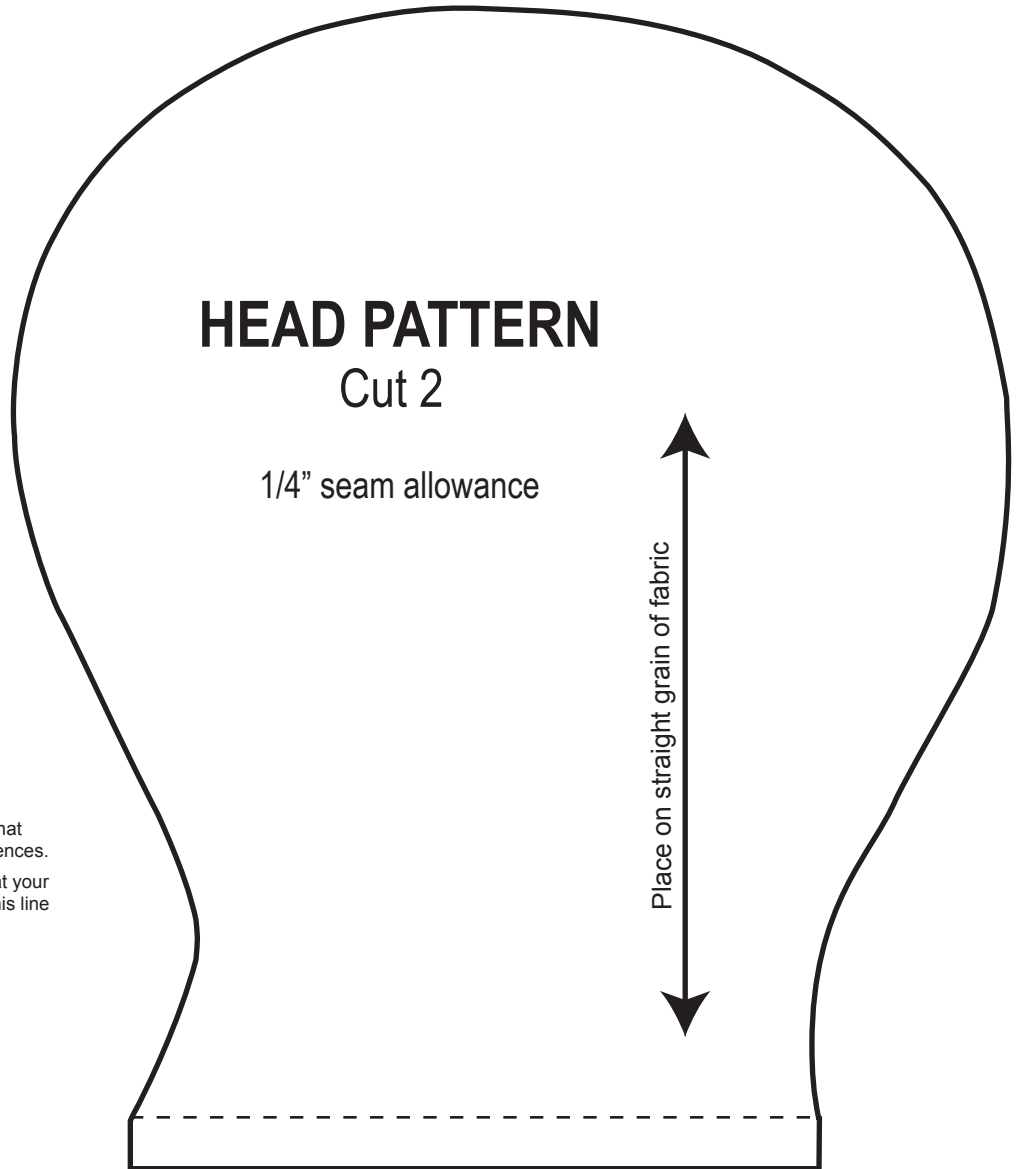


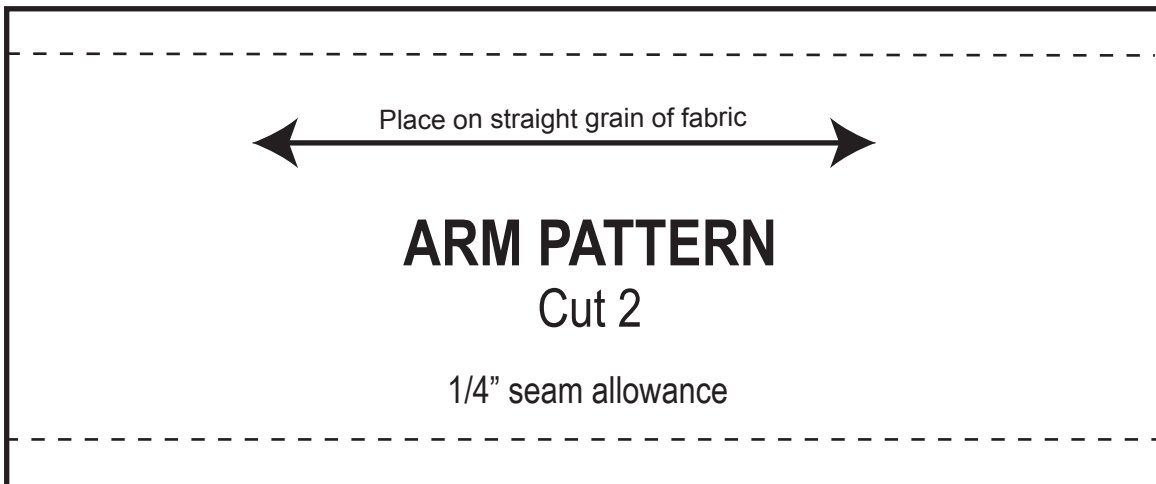
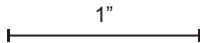
# Primitive Folk Pattern



## Important printing instructions:

When you print this PDF pattern, make sure that you select "actual size" in your printing preferences.

Use the below measuring guide to confirm that your pattern has been printed to the actual size. This line below should measure exactly one inch.

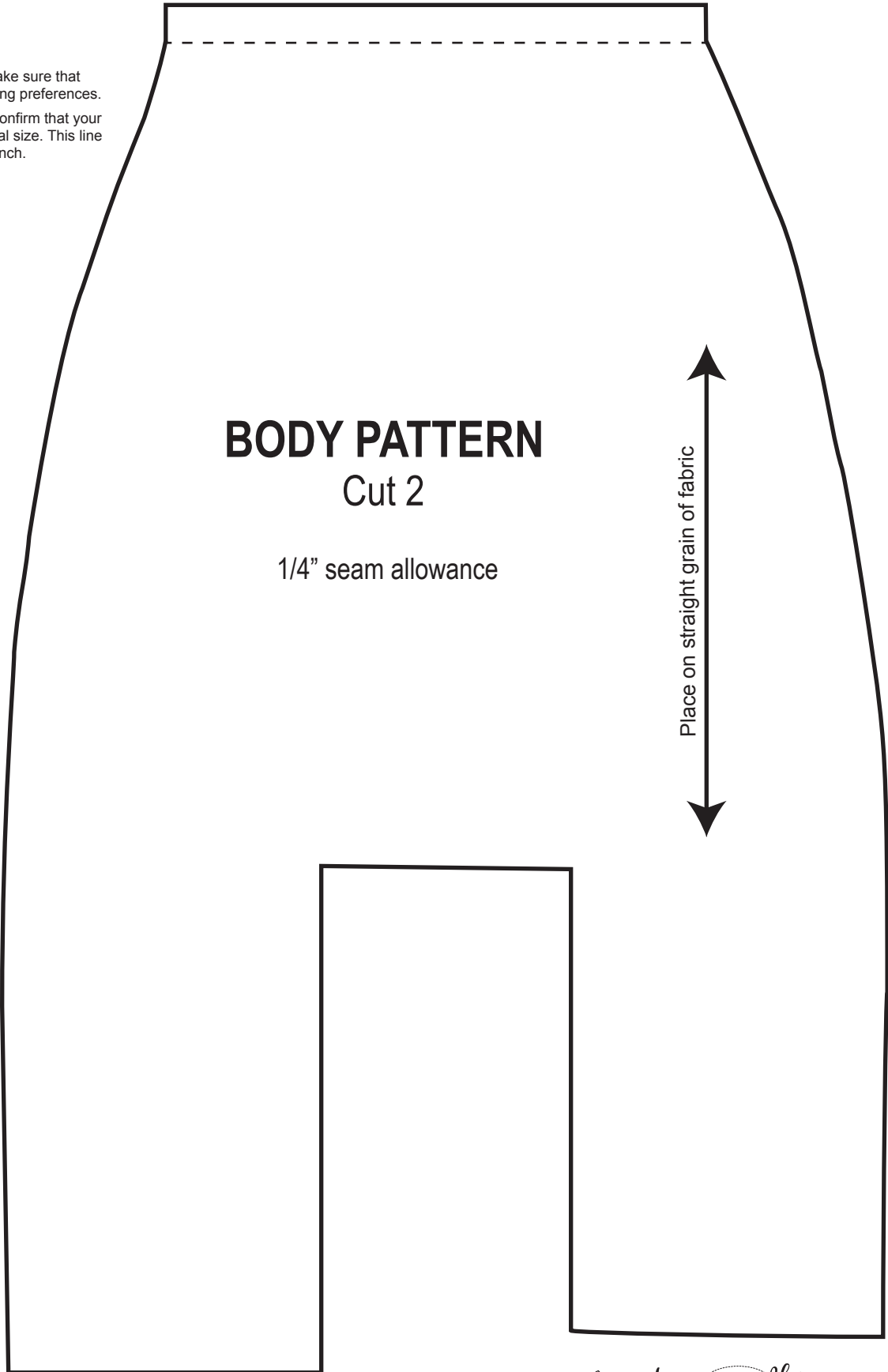
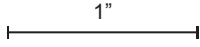


# Primitive Folk Pattern

**Important printing instructions:**

When you print this PDF pattern, make sure that you select "actual size" in your printing preferences.

Use the below measuring guide to confirm that your pattern has been printed to the actual size. This line below should measure exactly one inch.



**BODY PATTERN**

Cut 2

1/4" seam allowance

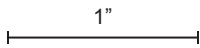
Place on straight grain of fabric

# Primitive Folk Pattern

**Important printing instructions:**

When you print this PDF pattern, make sure that you select "actual size" in your printing preferences.

Use the below measuring guide to confirm that your pattern has been printed to the actual size. This line below should measure exactly one inch.



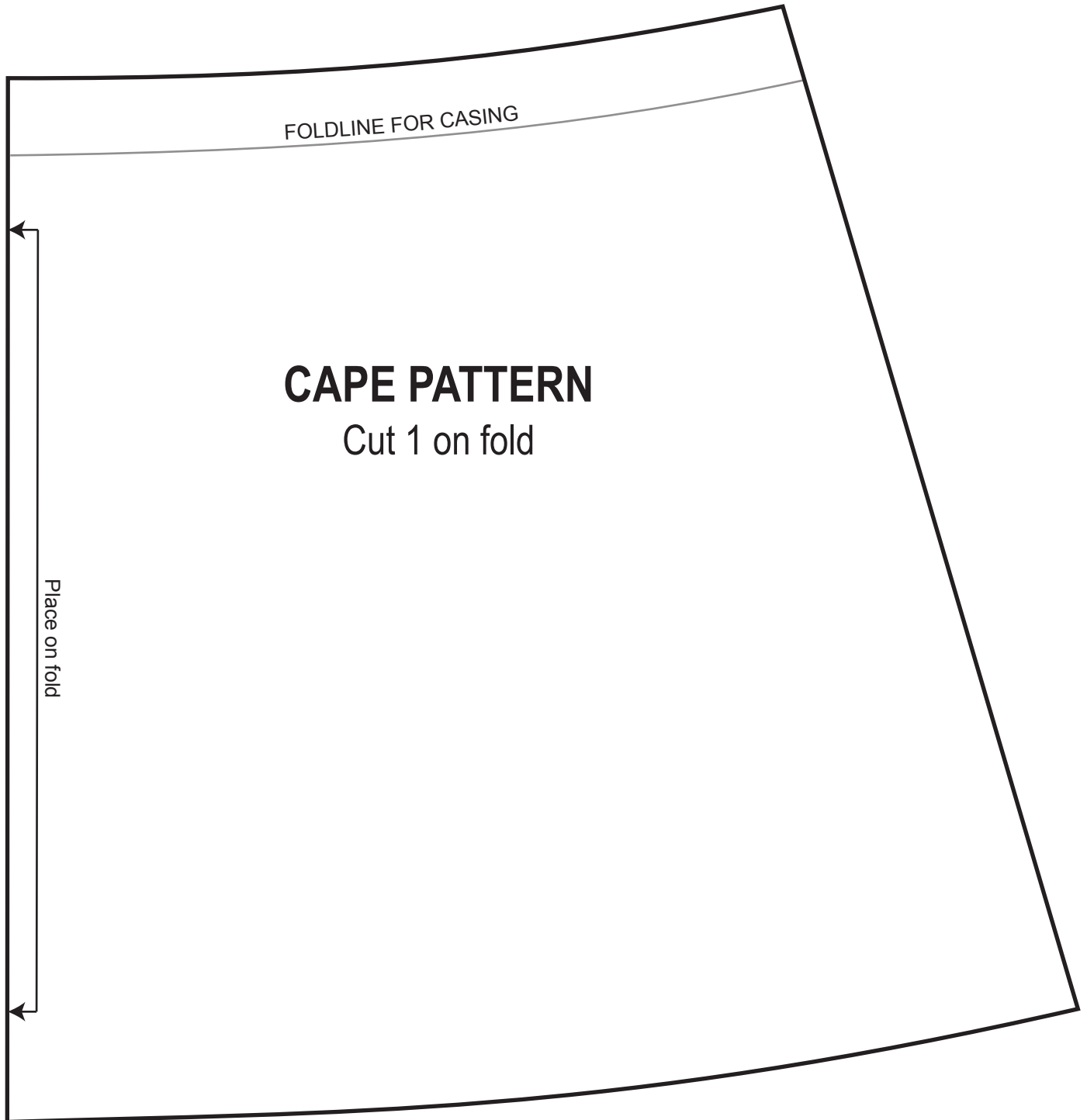
**SHIRT PATTERN**  
Cut 2

1/8" seam allowance

Split 1 piece at dashed line



# Primitive Folk Pattern



**Important printing instructions:**

When you print this PDF pattern, make sure that you select "actual size" in your printing preferences.

Use the below measuring guide to confirm that your pattern has been printed to the actual size. This line below should measure exactly one inch.

