



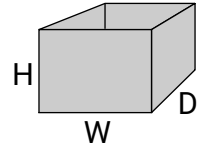
Fabric Box Worksheet

Use to determine size to cut fabric pieces.

Fabric Box Dimensions:

Fill in box dimensions and use those numbers to calculate fabric cut size. Transfer calculated numbers to color coordinated cut size boxes.

Width (W) X Height (H) X Depth (D)



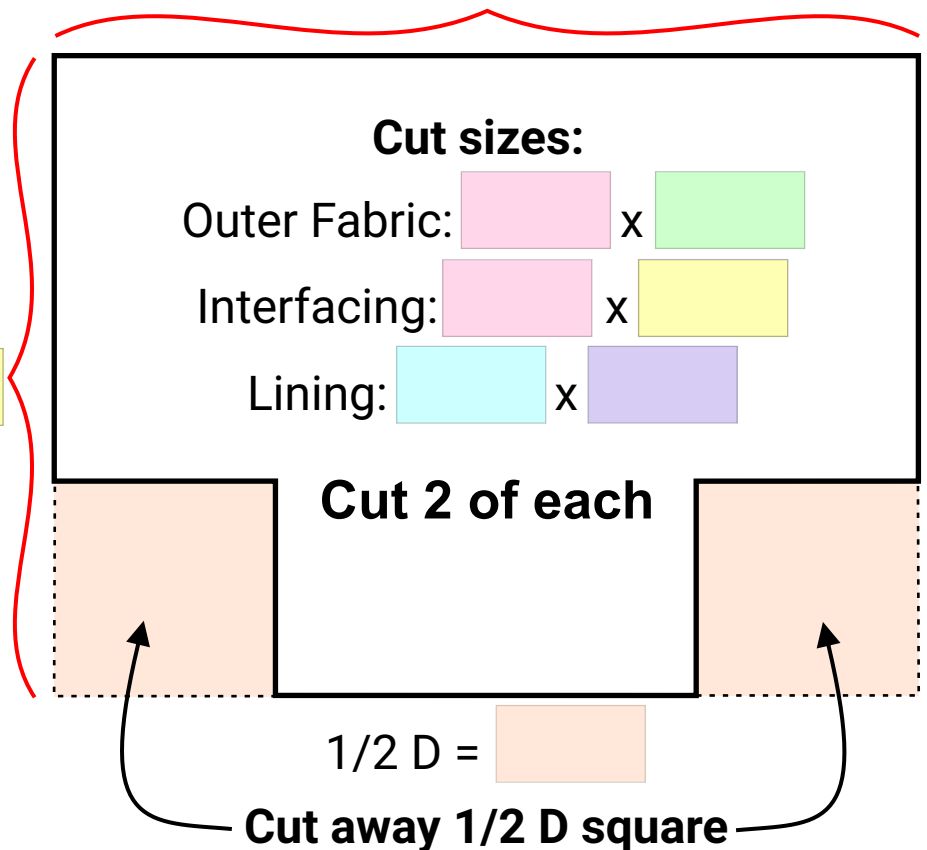
Calculate cut sizes: Outer fabric & Interfacing: $W + D + 1'' =$

Lining: $W + D + 3/4'' =$

Outer fabric:
 $1/2 D + H + 2'' =$

Interfacing (foam):
 $1/2 D + H + 1/2'' =$

Lining:
 $1/2 D + H =$



Cut large pieces to cut size first.

Then cut away 1/2 D square on each side of bottom.

1/2" seam allowances included

